

# Large Carnivores: management, research and public relation strategies of the protected areas



## Large Carnivores on the Alps:

current situation and future perspectives.  
The role of ALPARC Large Carnivores Work Group

Filippo Zibordi



PARCO NATURALE  
ADAMELLO BRENTA  
*Geopark*

# Alpine Large Carnivores





PARCO NATURALI  
ADAMELLO BRENTA

# Ecological differences...



feeding behaviour

dispersal ability



reproductive  
strategy





PARCO NATURALE  
ADAMELLO BRENTA

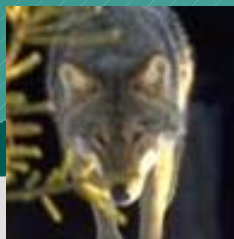
# ... "social" similarities





PARCO NATURALE  
ADAMELLO BRENTA

# Status of conservation

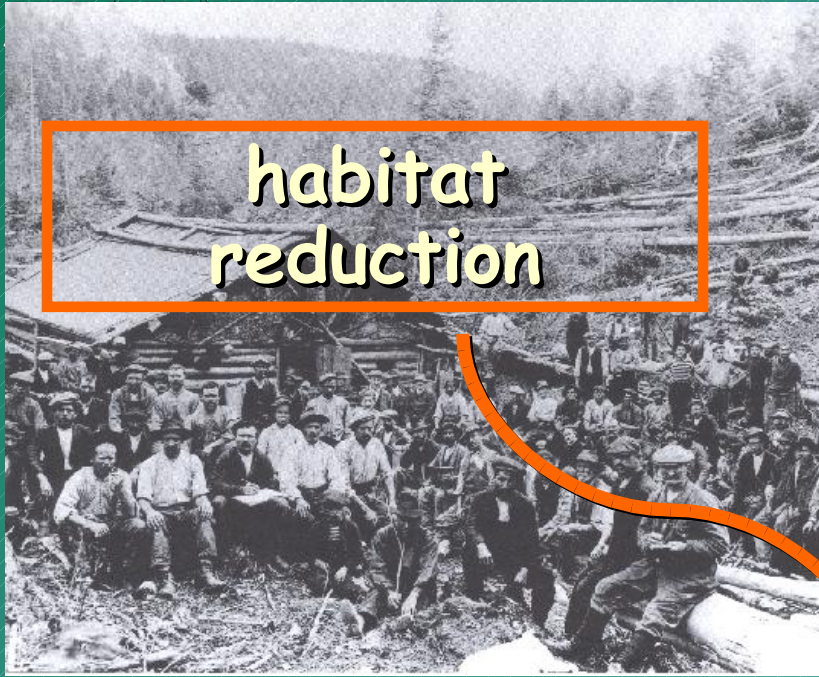


European Action Plans - LCIE



# Extinction on the Alps

habitat  
reduction



direct  
persecution

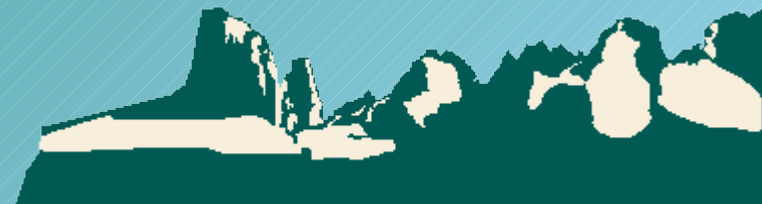


competition with men

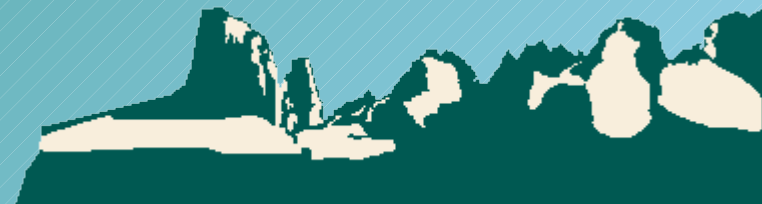
social-economical and  
cultural reasons



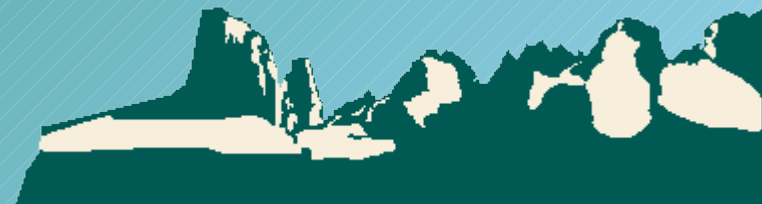
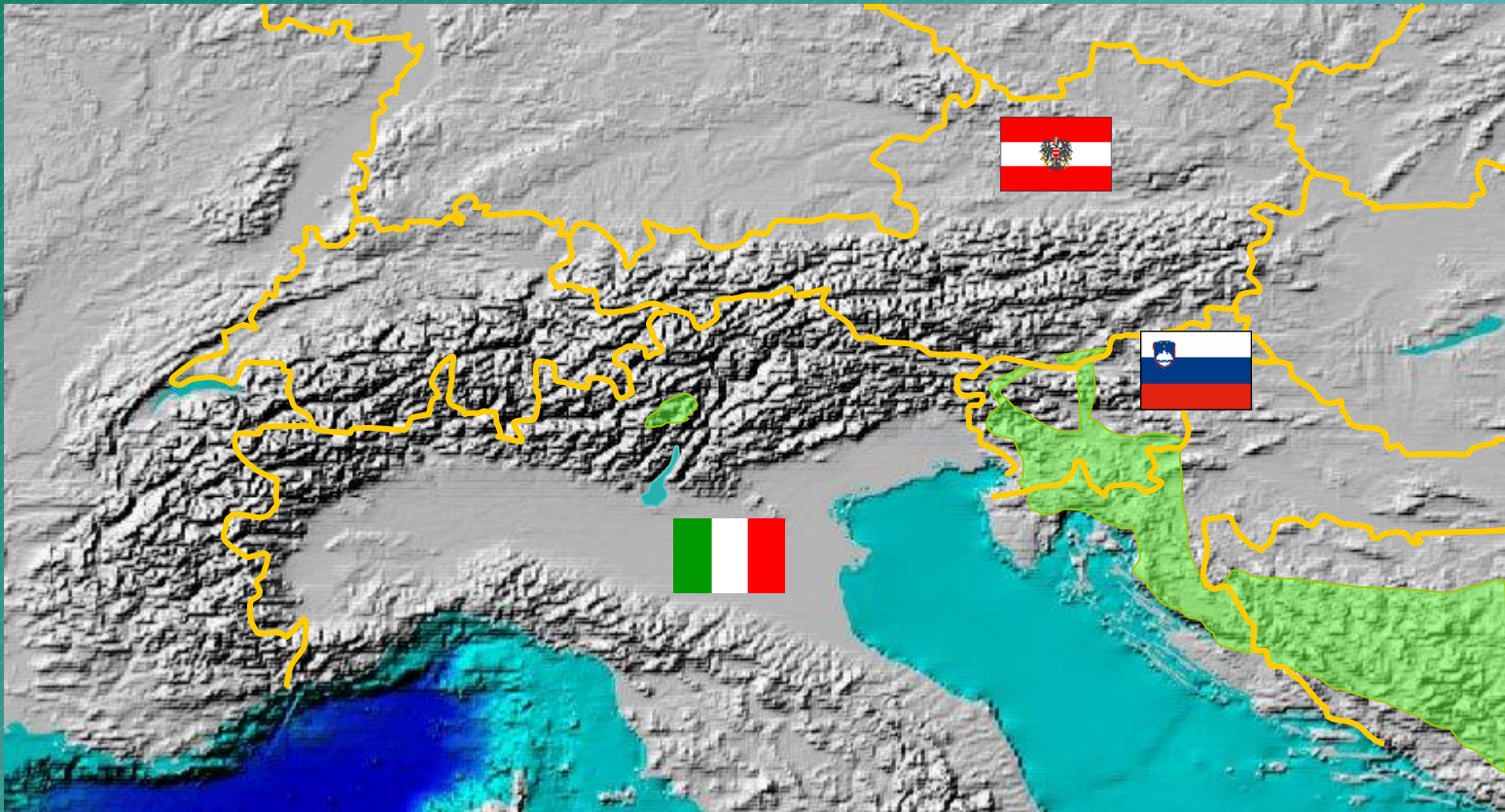
# Brown bear on the Alps in 1700



# Brown bear on the Alps in 1850

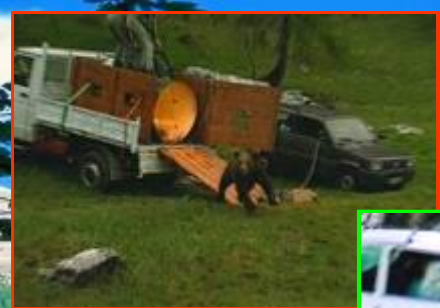


# Brown bear on the Alps in 1950



# Dispersal from Slovenia





PROTEZIONE CIVILE  
TRENTO



Parco Naturale  
Adamello Brenta  
Trentino - Italia

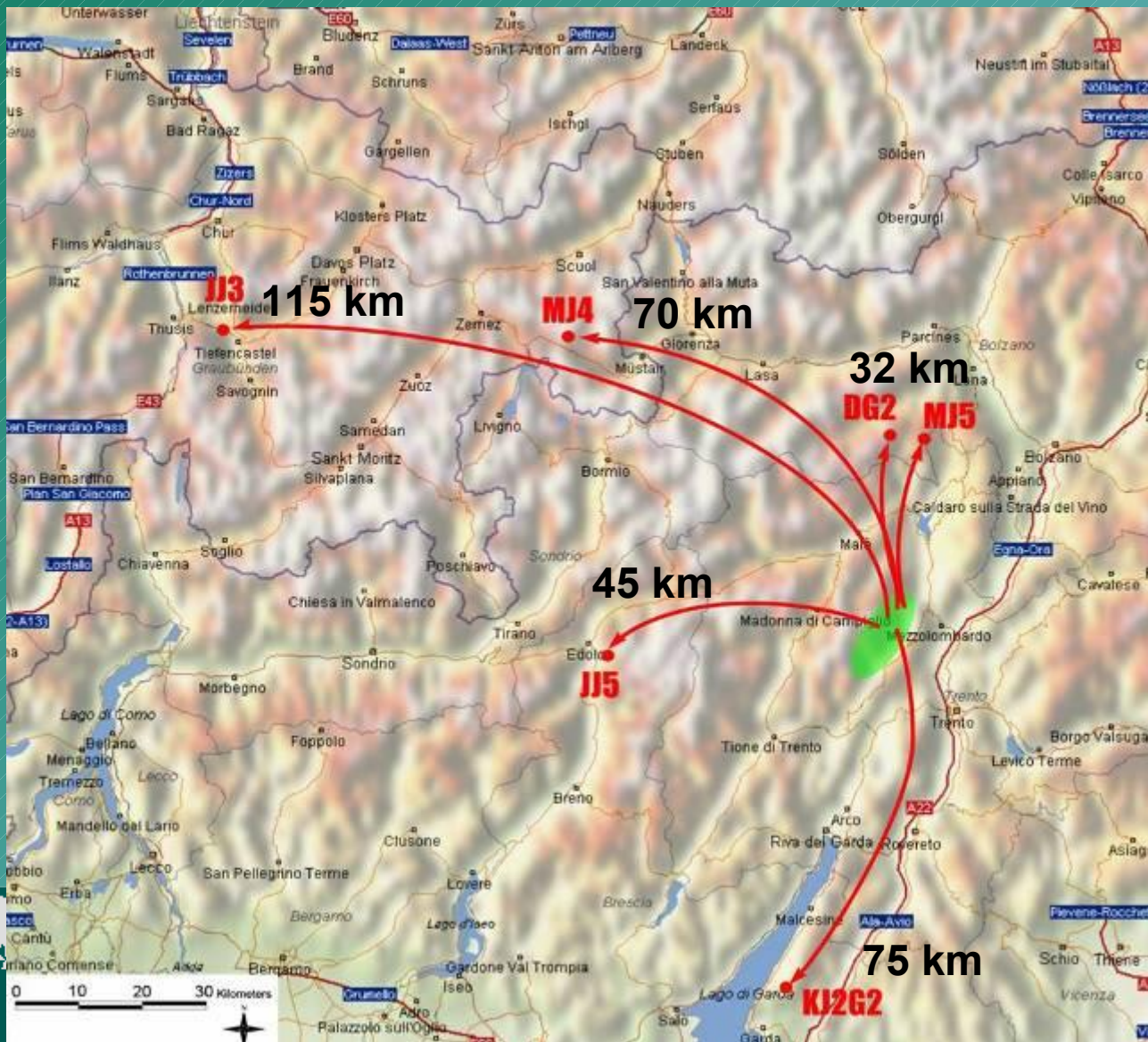
PROGETTO  
ORSO

1996 Project Life

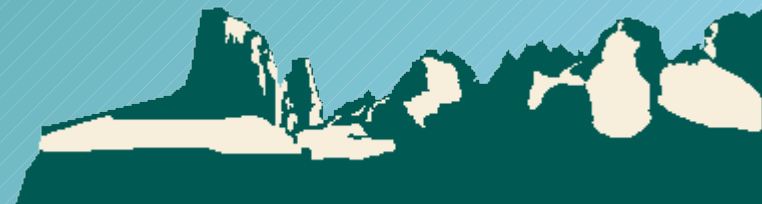
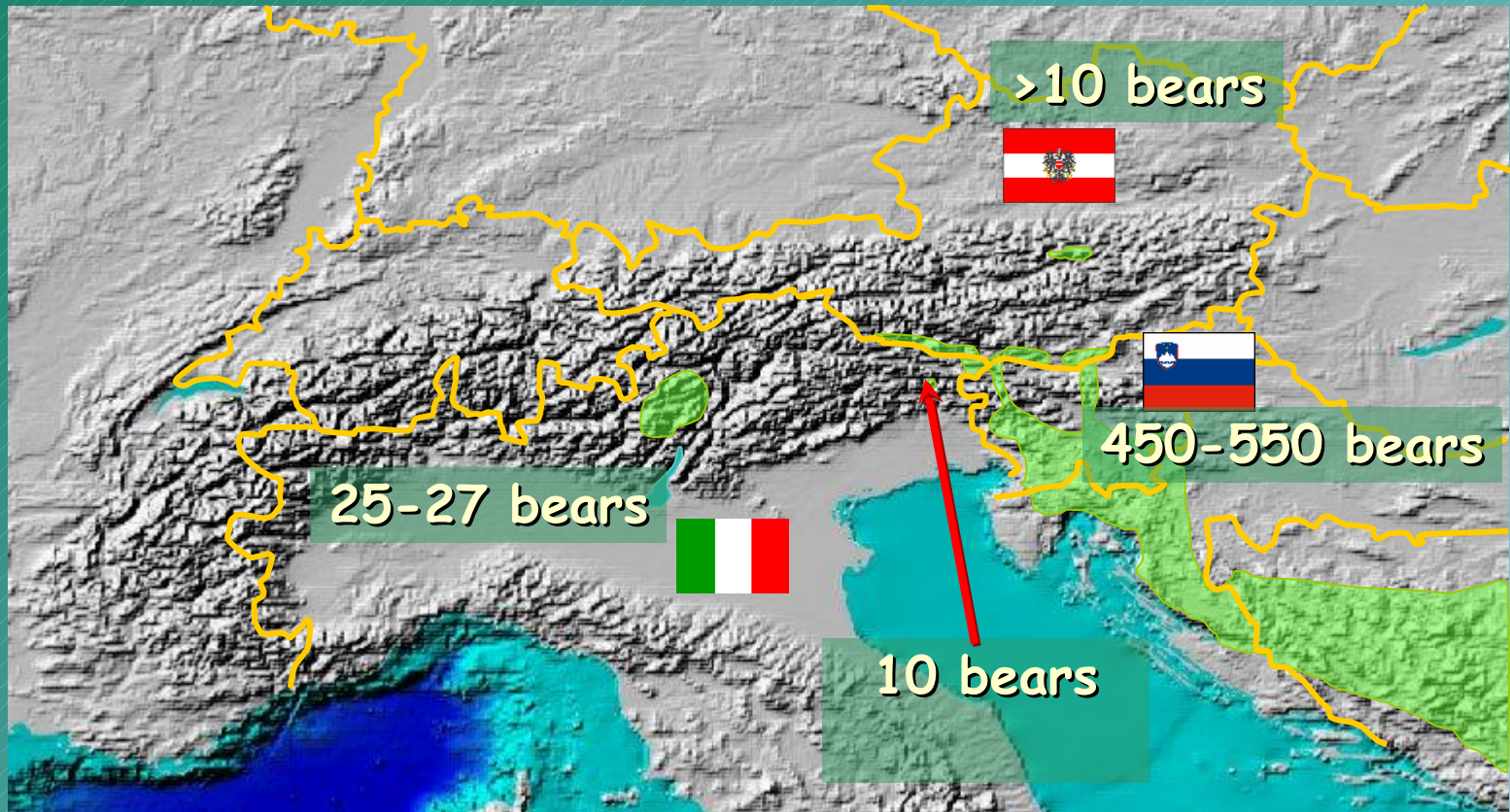
"Ursus": protection of Brenta brown bear population



# Expansion from Trentino



# Actual distribution of brown bear on the Alps

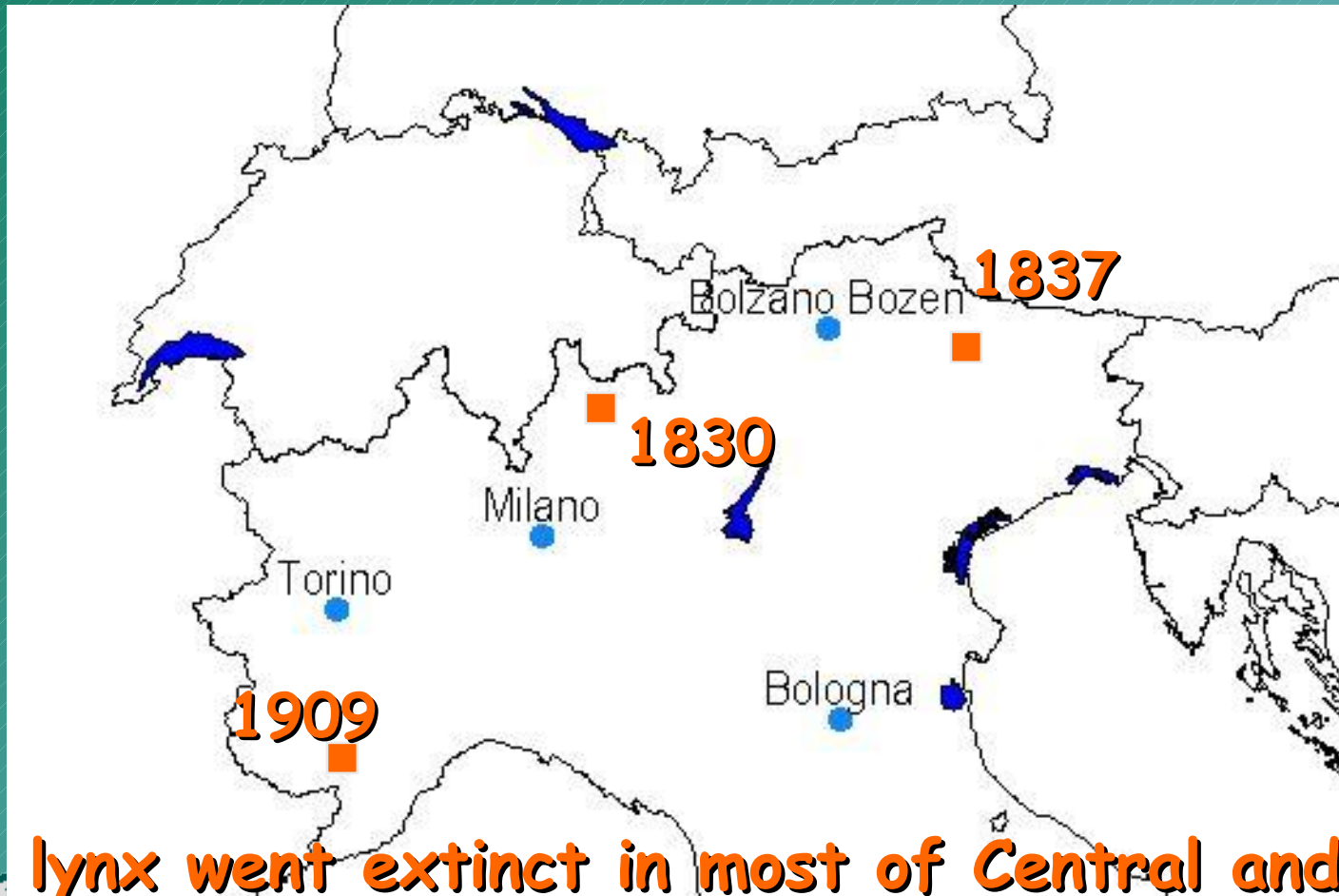


# Lynx disappearance from the Alps



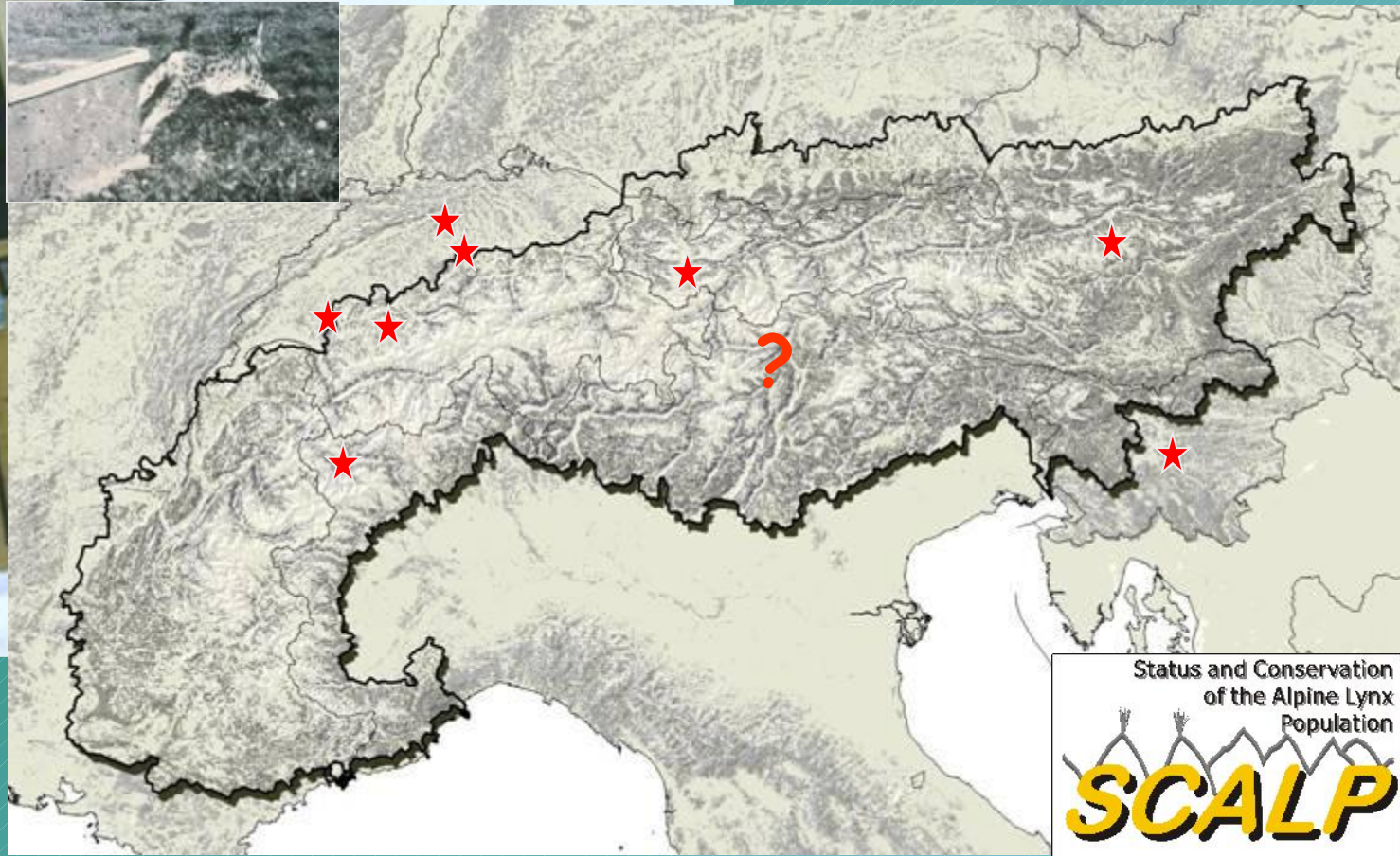
beginning of 1800

# Lynx disappearance from the Alps



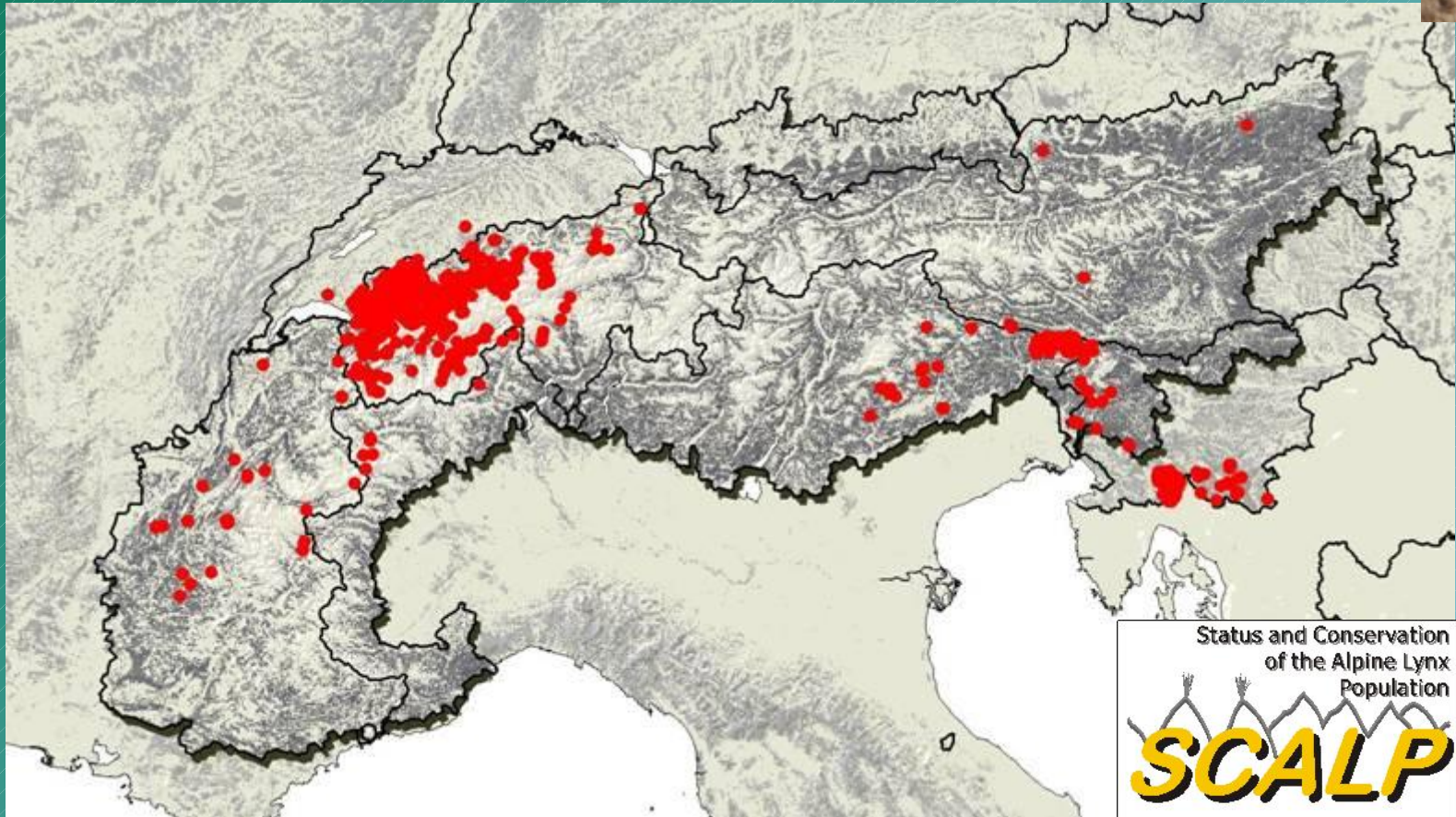
lynx went extinct in most of Central and Western Europe at the end of the 19th century

# The return



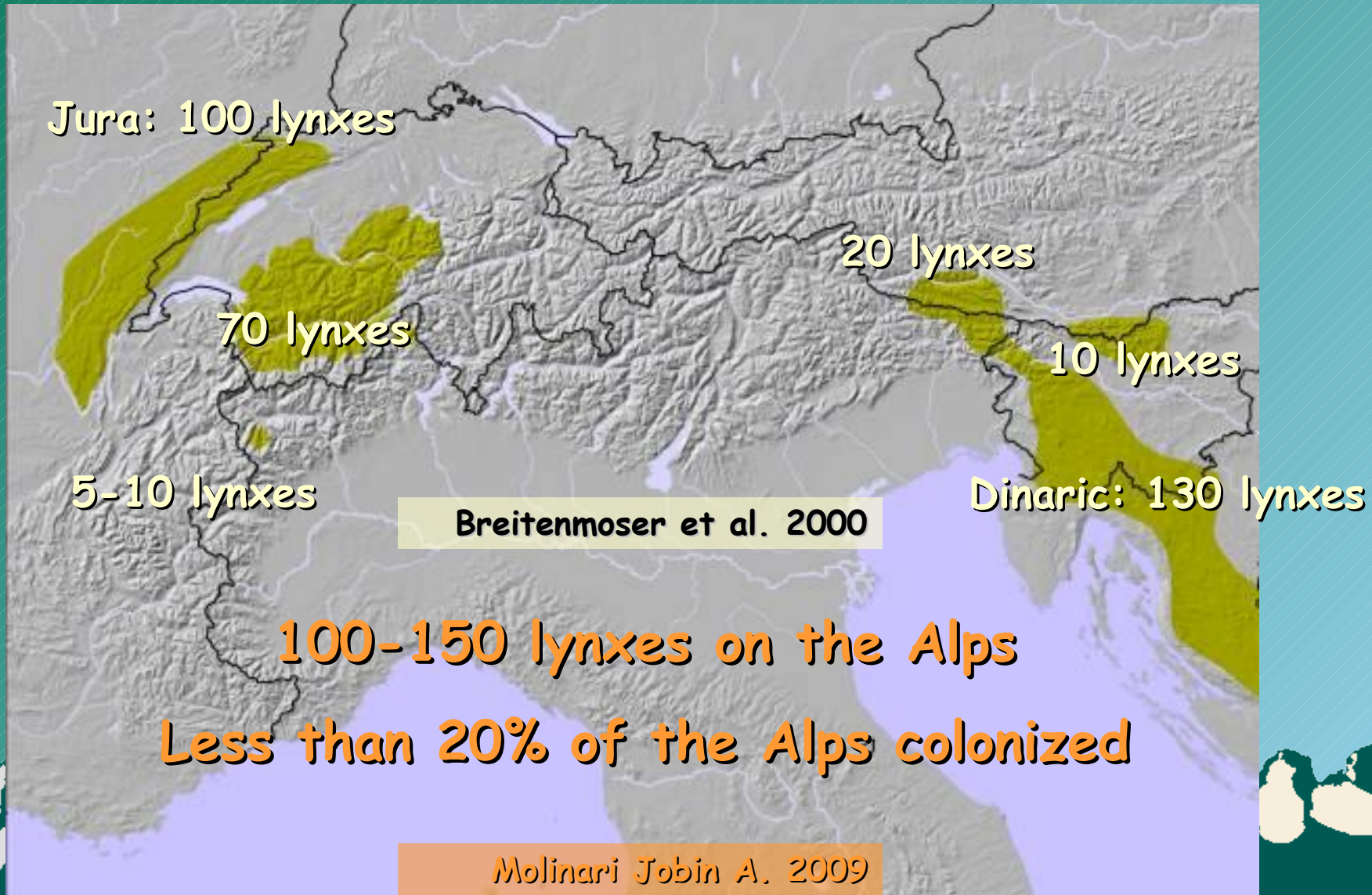
Reintroduction sites during the 70ies

# The return

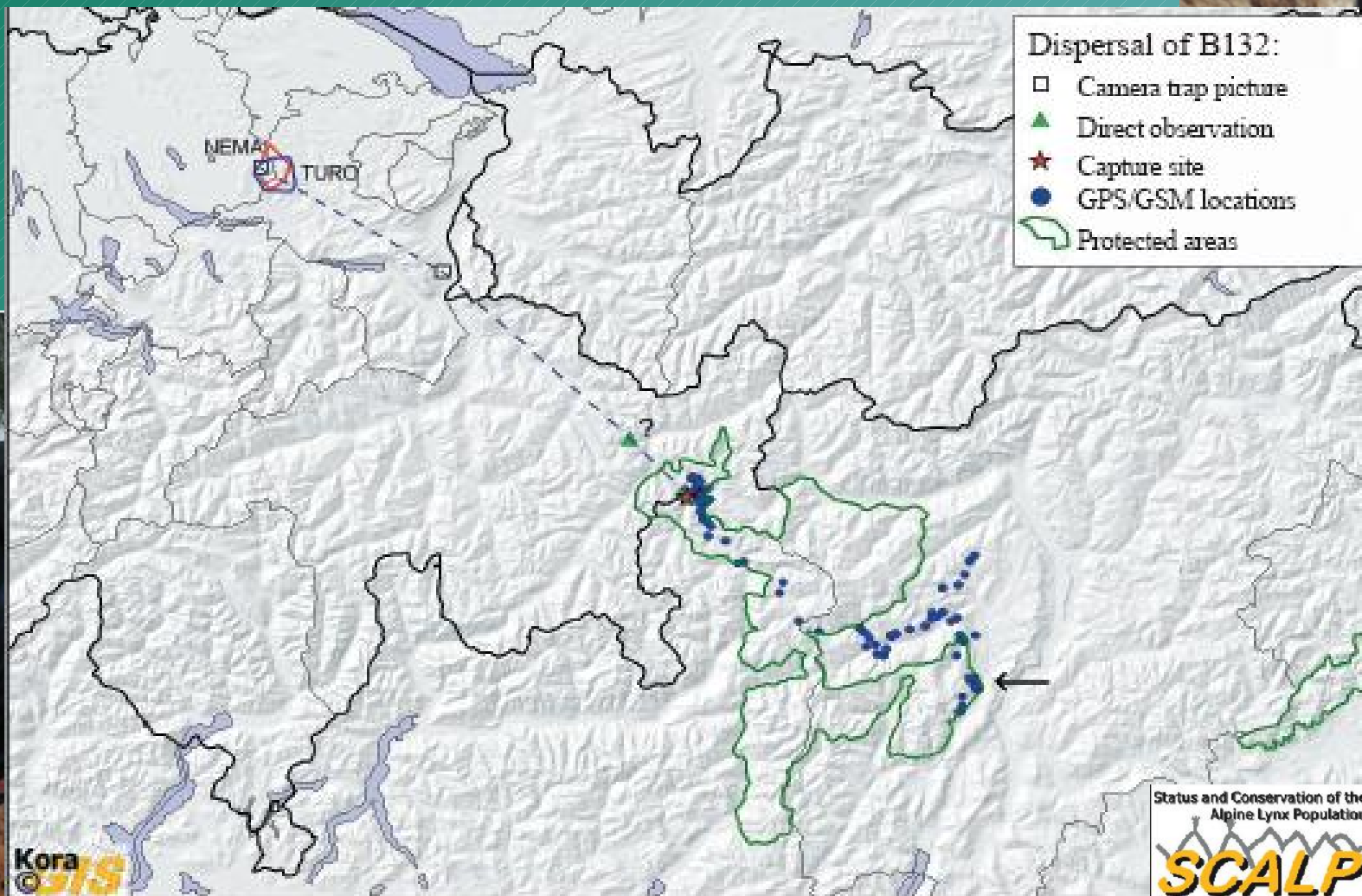


- confirmed occurrence records (1995-1999)

# Actual distribution of lynx on the Alps



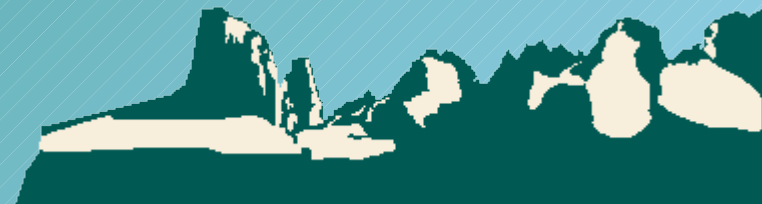
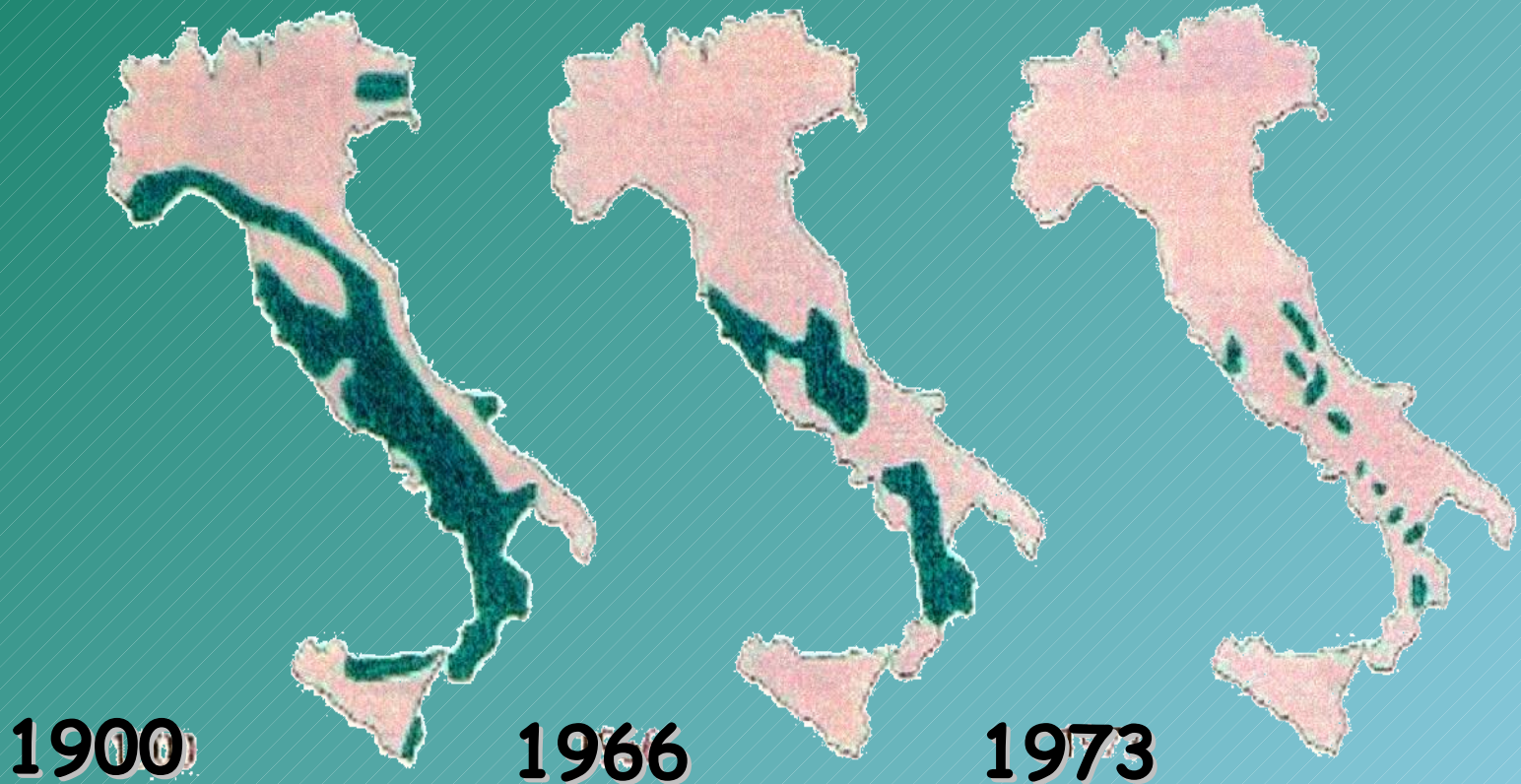
# Good hopes...



# Wolf history: Italy



**20ies** - Extinction on the Alps



# The return



>500 wolves are  
present today in Italy



# The return

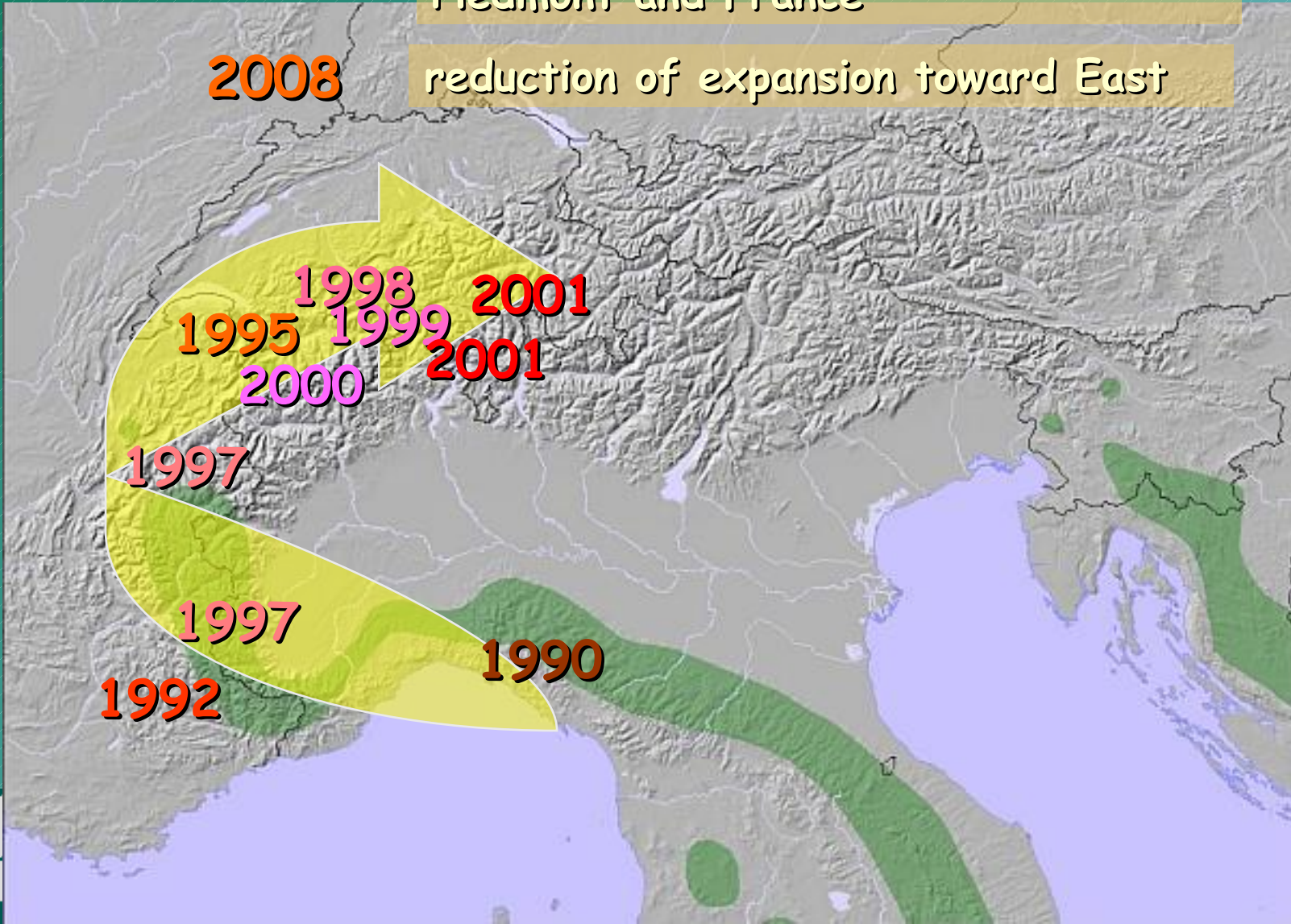


**2005**

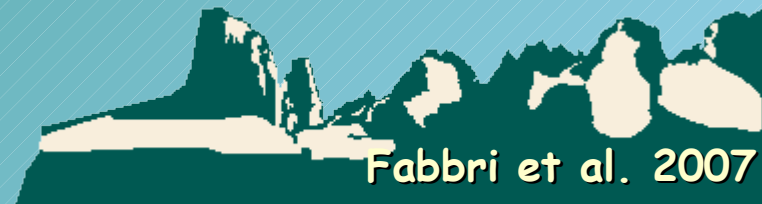
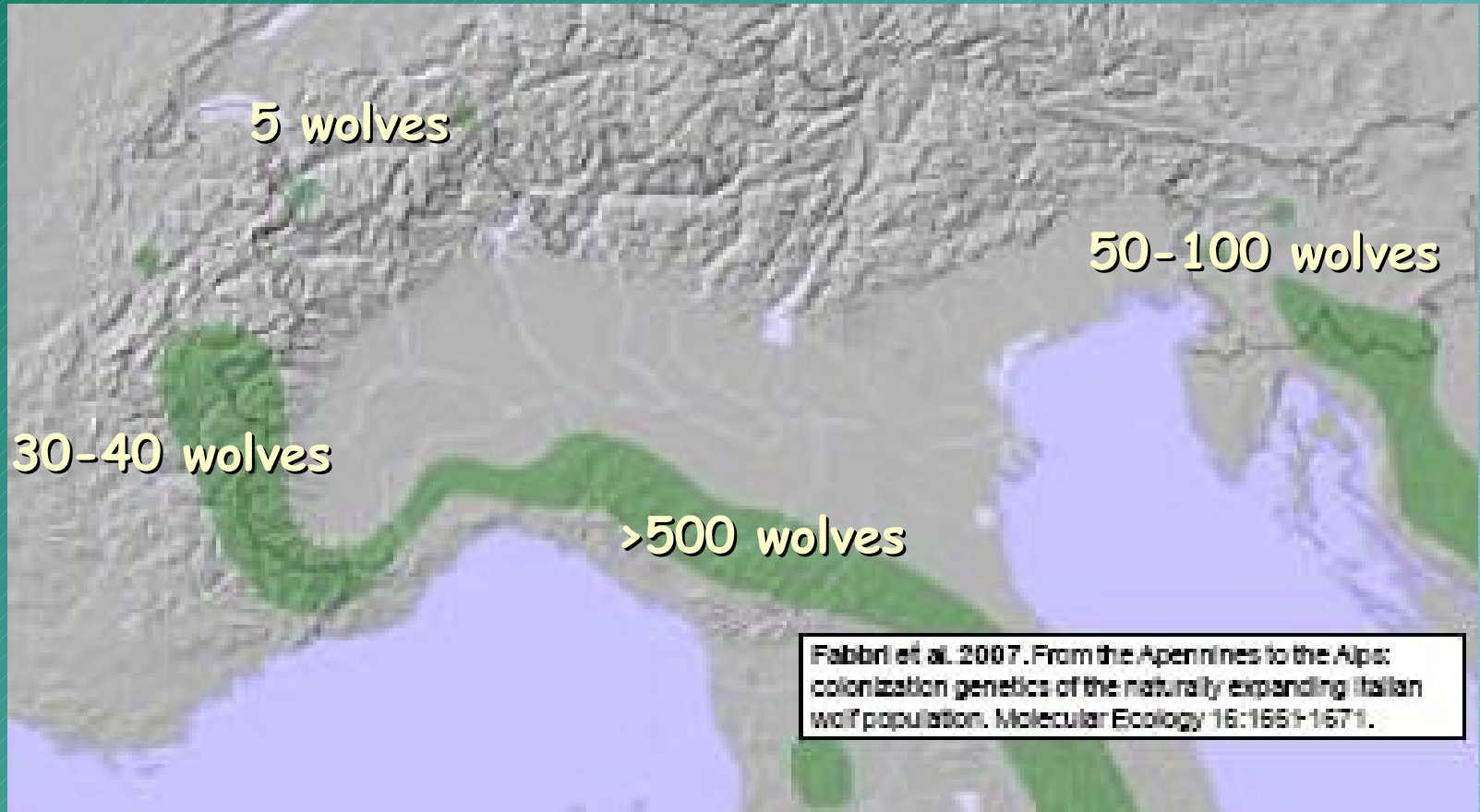
7 packs (40-50 individuals) between  
Piedmont and France

**2008**

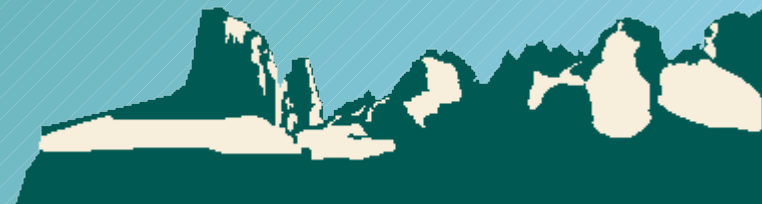
reduction of expansion toward East



# Actual distribution of wolf on the Alps



# Problem



# Problem

considering that large carnivores:

- ✓ have wide home ranges and high quality habitat requests
- ✓ live at low densities
- ✓ have low reproductive rates
- ✓ have a cultural, social, emotive (economic) impact on men
- ✓ need shared management policies
- ✓ are scarcely monitored and known in the Alpine habitat
- ✓ do not necessarily occur in protected areas

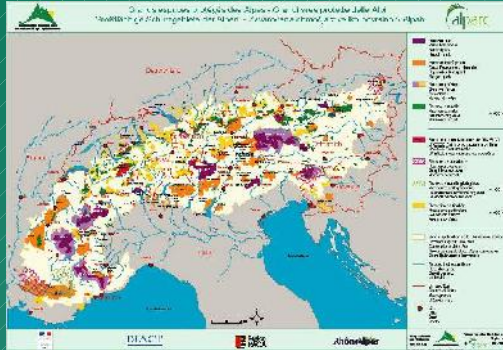




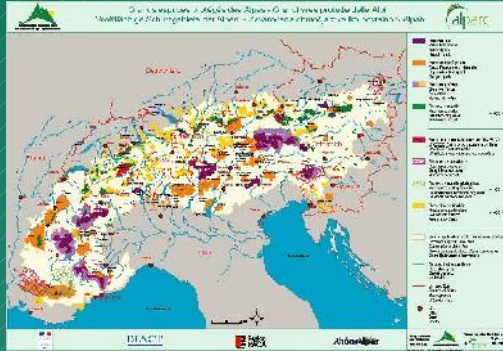
# Solutions

➤ active conservation projects

✓ save populations from extinction/restocking, etc.



# Solutions



➤ increase knowledge about the species

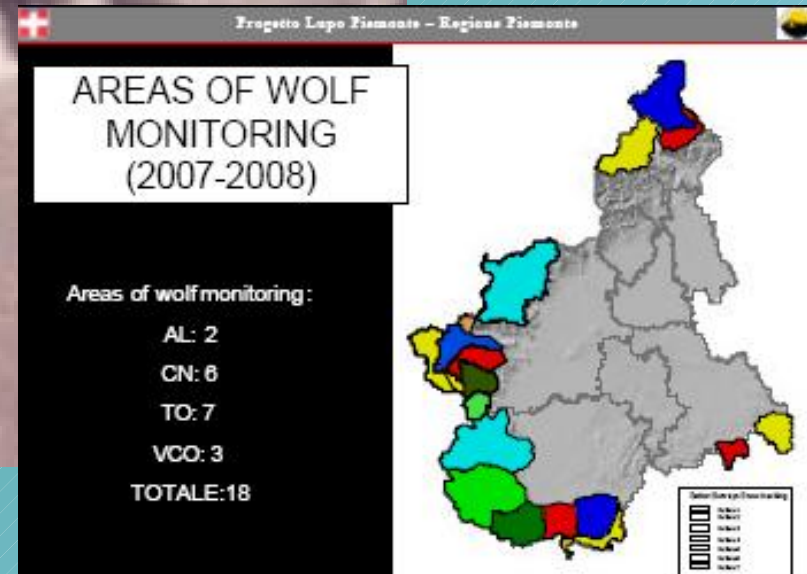
- ✓ strengthen monitoring
- ✓ share knowledge
- ✓ realize applied scientific researches



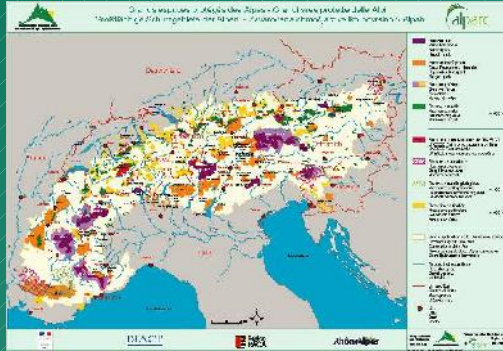
# Wolf in Piedmont



Centro Gestione e  
 Conservazione Grandi Carnivori  
 - Regione Piemonte

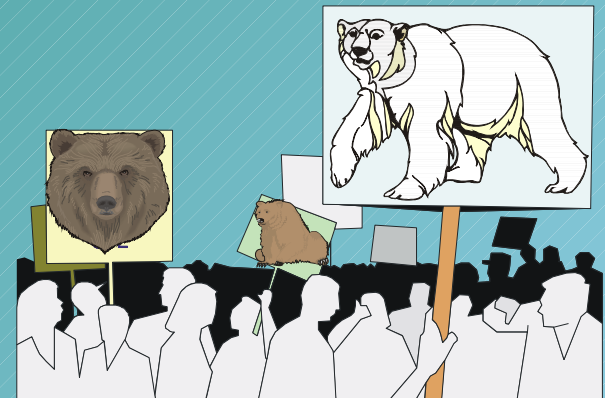


# Solutions



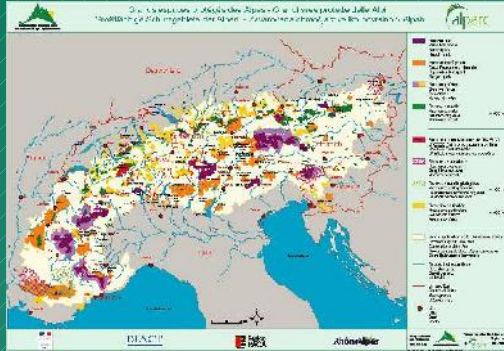
➤ prepare the social habitat for the coexistence with large carnivore

- ✓ communication activities
- ✓ damage prevention issues
- ✓ ...

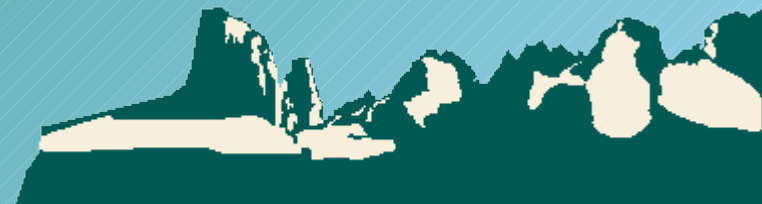


# Solutions

➤favour the adoption of convenient conservation choices



promoting centers  
and examples beyond  
their legal  
boundaries



# "Large Carnivores" Work Group



1<sup>st</sup> International Workshop "Large Carnivores" - 2000  
Triglav National Park (SL)

Spormaggiore 03

"Declaration of Intentions and Action Program for the realization of activities aiming to the conservation of brown bear, wolf and lynx"

# "Large Carnivores" Work Group

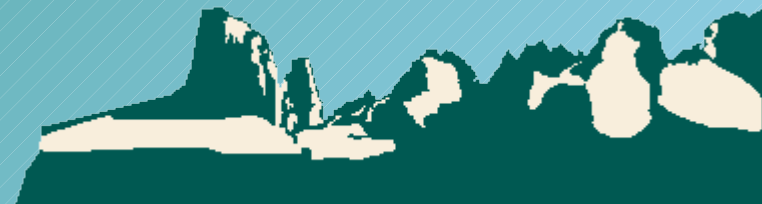


## create an active cooperation group



sharing of the experiences  
and methodologies developed  
(e.g. personnel exchanges,  
"study tours"):

- ✓ communication activities
- ✓ species monitoring
- ✓ conflict resolution

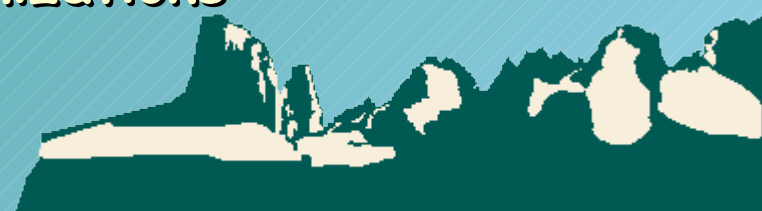


# Work Programme 2009-2010

"Large Carnivores" Work Group



1. To improve **exchanges of information and data** between the protected areas
2. To work in **synergy with other national and international networks** of experts
3. To examine the potential for **developing an international project** within the Alps or further afield
4. To exploit **synergies between the monitoring activities** carried out in the protected areas and research programmes in place in other organizations



**Thank you for your  
attention**



**PARCO NATURALE  
ADAMELLO BRENTA**  
*Geopark*