

# Network Natural Forests

connecting habitats – finding ways  
together



# ECONNECT

- Alpine wide project for securement and improvement of ecological connectivity in the Alps
- The Northern Limestone Alps have been [pilot region](#)
- Following project together with MAVA Fondation pour la nature, Switzerland
  - > Netzwerk Naturwald (May 2012 – April 2016)



# Int. laws and contracts

- Convention on the Conservation of Migratory Species of Wild Animals (**CMS**), **1979**
- Convention on Biological Diversity (**CBD**), **1993**
- Alpine Convention, **1995**
- Convention on the Conservation of European Wildlife and Natural Habitats (**Berner Konvention**), **1997**
- MCPFE, Helsinki-Prozess, since 2009 named **Forest Europe**, active since **1990**
- **Habitats-Directive** and **Birds-Directive**
- **EU Biodiversity Strategy to 2020, *Pan-European Biological and Landscape Diversity Strategy (PEBLDS)*,...**
- ...



# the project

- 3 protected areas in the „border triangle“:
  - Kalkalpen national park (IUCN II)
  - Gesäuse national park (IUCN II)
  - Dürrenstein wilderness area (IUCN Ia)
- region stated as „Hotspot of Biodiversity“ (ALPARC, 2003)
- One of „Priority Areas in the Alps“ of Ecoregion Conservation Plan for the Alps of WWF



# what are we doing?

- common development and implementation of strategies for ecological compound
- platform of cooperation
- raise awareness for the gemstones of the region
- highlight the potential for regional development
- implementation of concrete pilot projects



# Projektgebiet Netzwerk Naturwald



= **integrated planning landscape and**



# analysis of the area

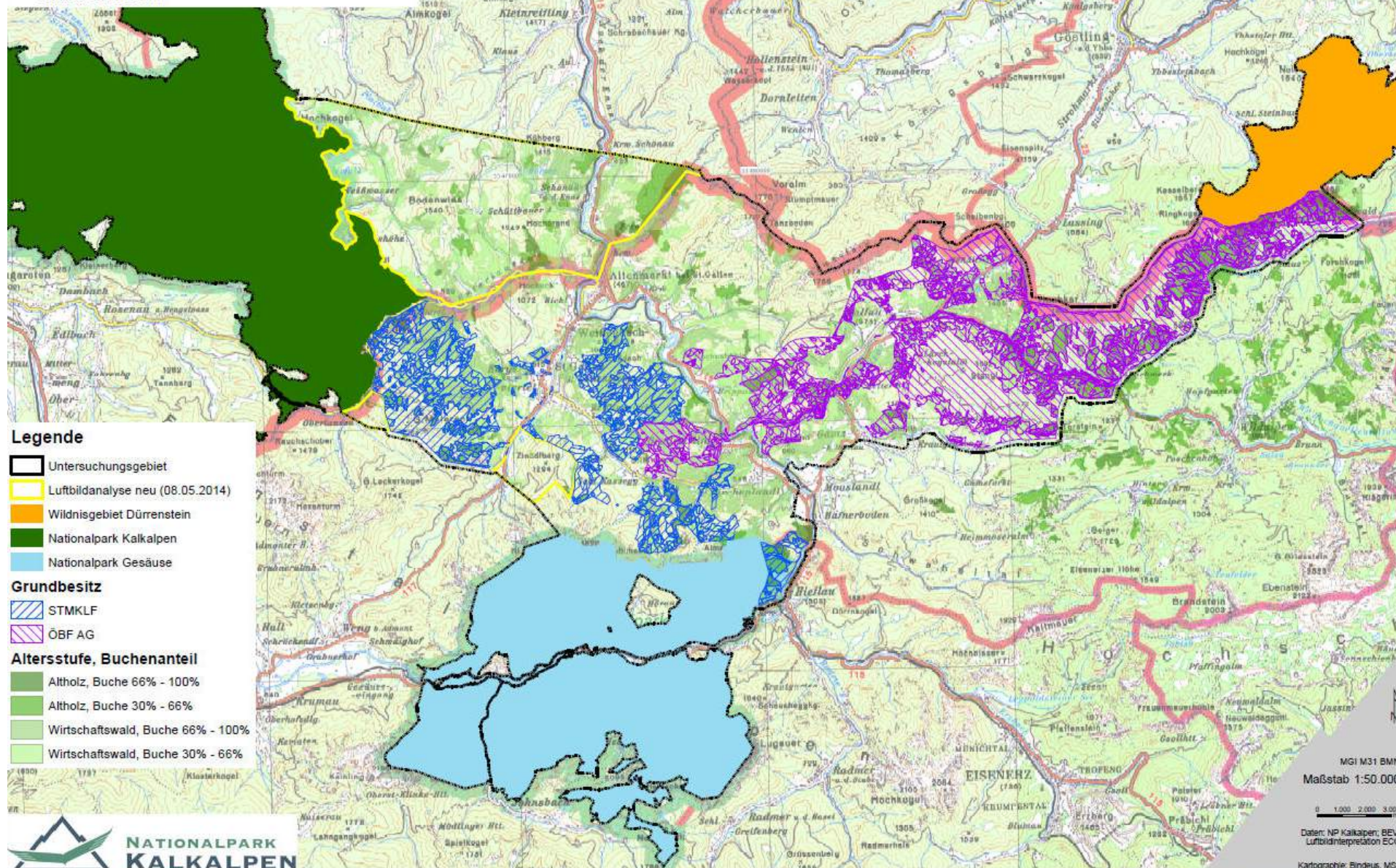
- analysis of data: CORINE Landcover, density of forest roads, altitudinal belt, aerial photos, ...
- potential natural vegetation (PNV) -> broad-leaved forest dominated by beech (*fagus sylvatica*); we also focus on fir and other endangered tree species
- analysis done by 4 simplified types of forest
- corridor of potential stepping stones identified





# ARBEITSKARTE Netzwerk Naturwald Ergebnisse der Luftbildinterpretation

Stand: 08.05.2014



## Legende

- Untersuchungsgebiet
- Luftbildanalyse neu (08.05.2014)
- Wildnisgebiet Dürrenstein
- Nationalpark Kalkalpen
- Nationalpark Gesäuse

## Grundbesitz

- STMKLF
- ÖBF AG

## Altersstufe, Buchenanteil

- Altholz, Buche 66% - 100%
- Altholz, Buche 30% - 66%
- Wirtschaftswald, Buche 66% - 100%
- Wirtschaftswald, Buche 30% - 66%

MGI M31 BMN  
Maßstab 1:50.000

Daten: NP Kalkalpen; BEV;  
Luftbildinterpretation ECO  
Kartographie: Bindeus, MSC

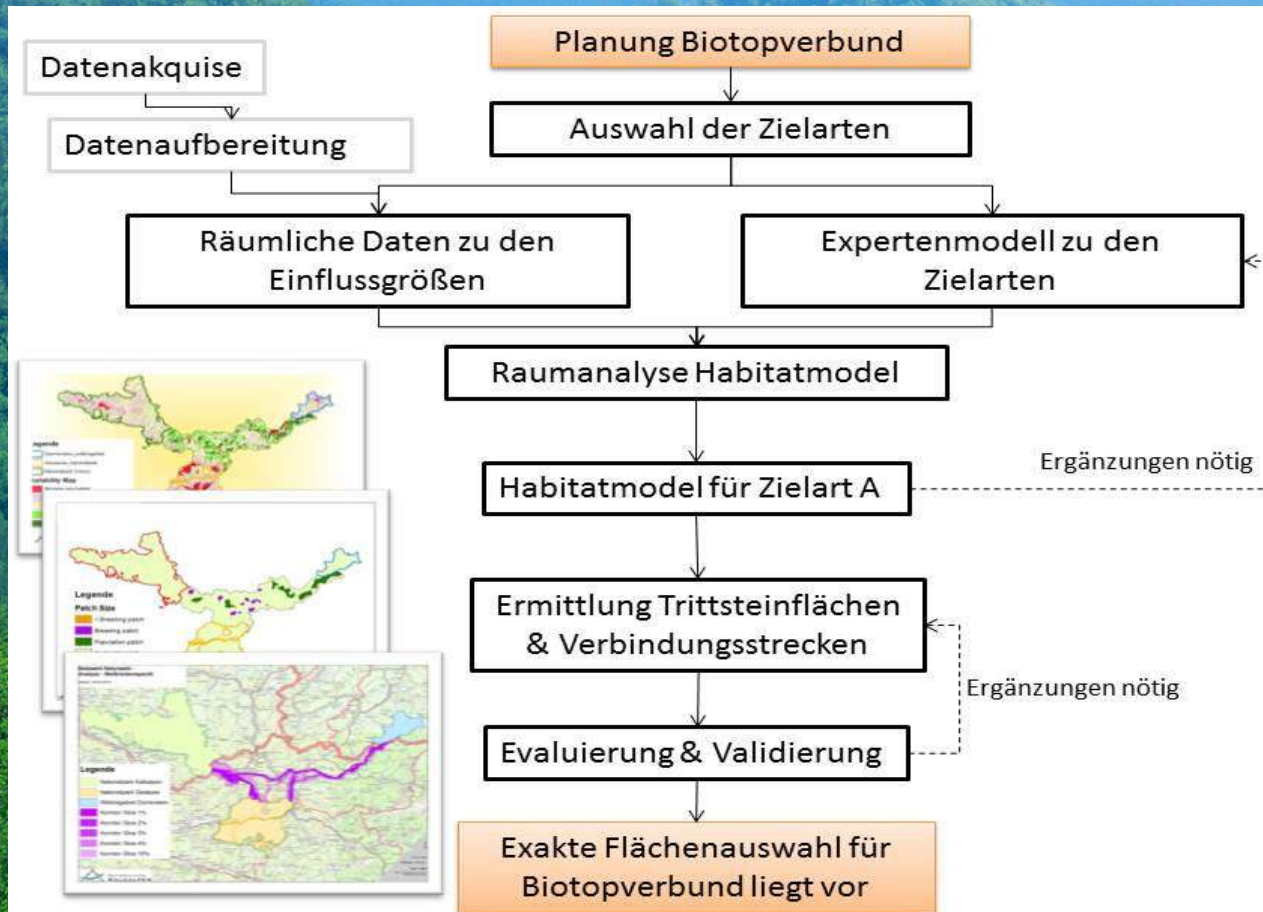


# modelling of stepping stones

- software based on GIS (CorridorDesigner®)
- modelling via habitats of species
- corridor of stepping stones in natural forests
- implement integrative measures together with forestry in between
- identification of possible barriers → solutions



# GIS - Modellierung





# modelling

Ausrichtung



Landbedeckung



Seehöhe



Einteilung der einzelnen naturräumlichen Bedingungen entsprechend ihrer Qualität für die Leittierart

exposition - Editor				
Datei	Bearbeiten	Format	Ansicht	?
1	67,5	:	20	
67,5	112,5	:	40	
112,5	247,5	:	100	
247,5	292,5	:	40	
292,5	360	:	20	

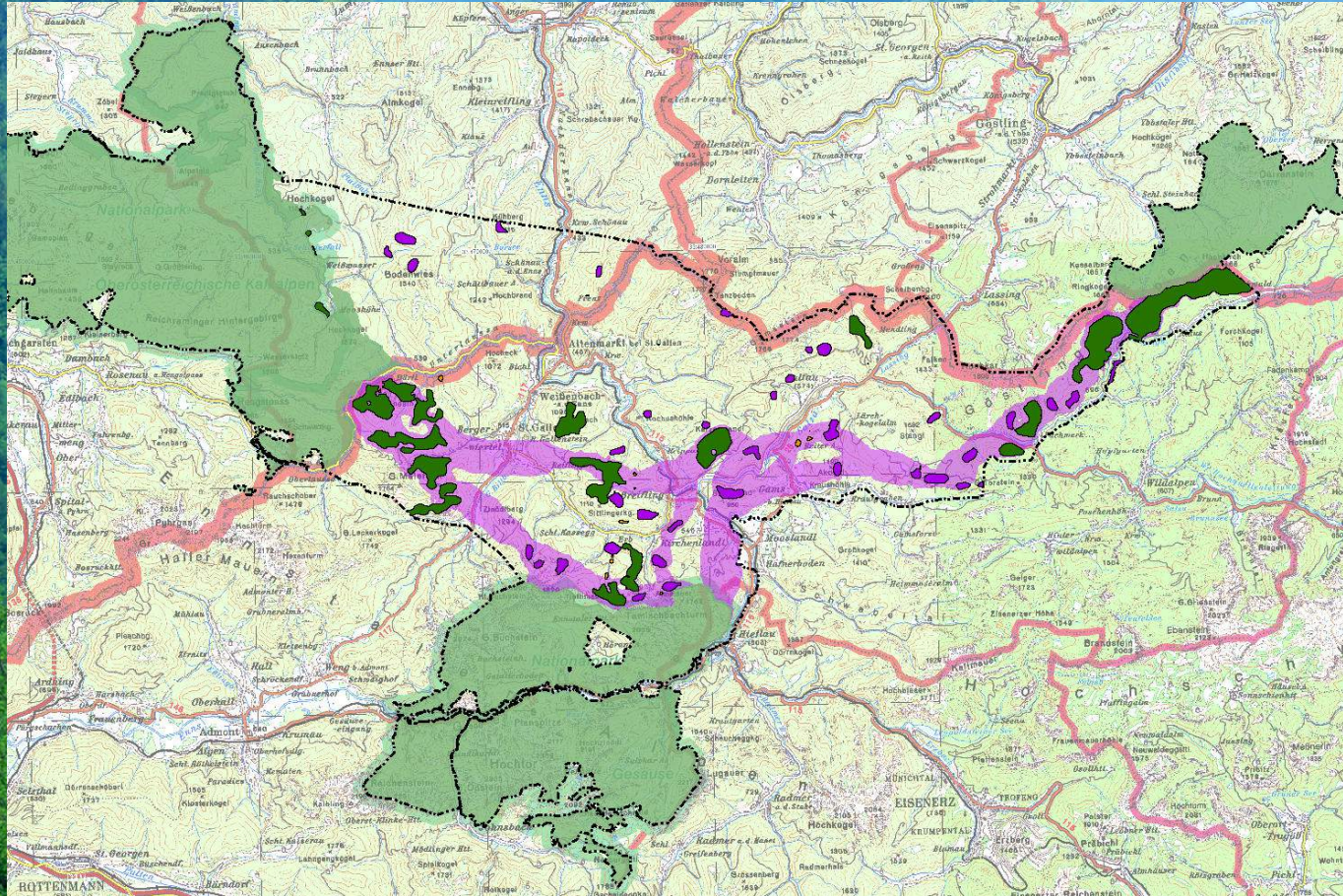
landbedeckung_v2 - ...				
Datei	Bearbeiten	Format	Ansicht	?
1	:	100		
2	:	90		
3	:	30		
4	:	80		
5	:	35		
6	:	30		
7	:	50		
8	:	40		
9	:	30		
10	:	35		

seehoehe - Editor				
Datei	Bearbeiten	Format	Ansicht	?
0	500	:	100	
500	900	:	80	
900	1400	:	60	
1400	1700	:	40	
1700	2400	:	0	



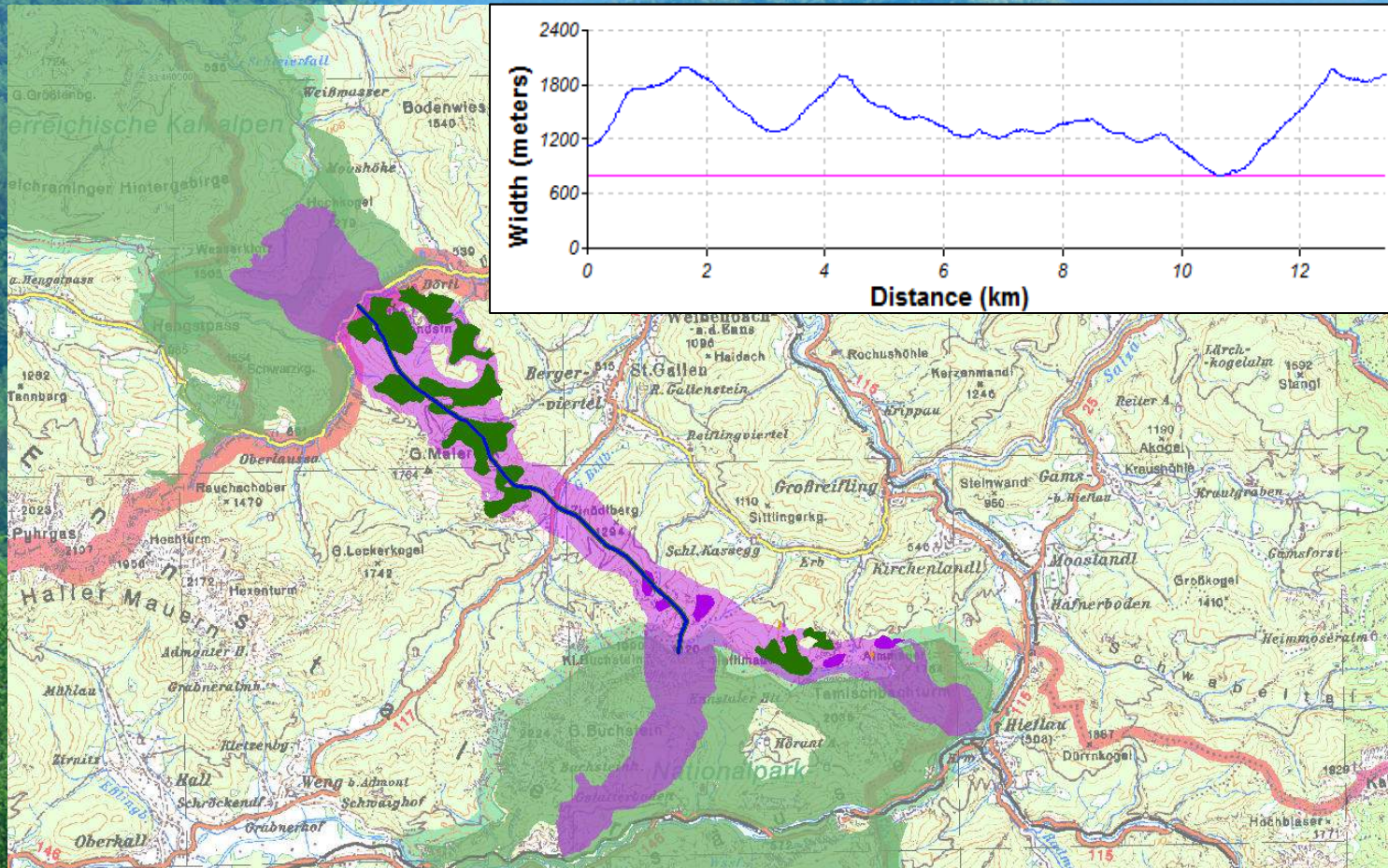


# modelling - WBWP





# modelling - WBWP





### Einstufung der Trittsteinflächen

The map illustrates the distribution of stepping stones (Trittsteinflächen) for the Alpine ibex (Alpensteinbock) across the Alpine region. The red areas represent the presence of these stepping stones. The map includes labels for various locations such as Kramling, Hütten, Gosling, Leising, Wollan, and Hella. A scale bar at the bottom right indicates distances up to 1000 meters.

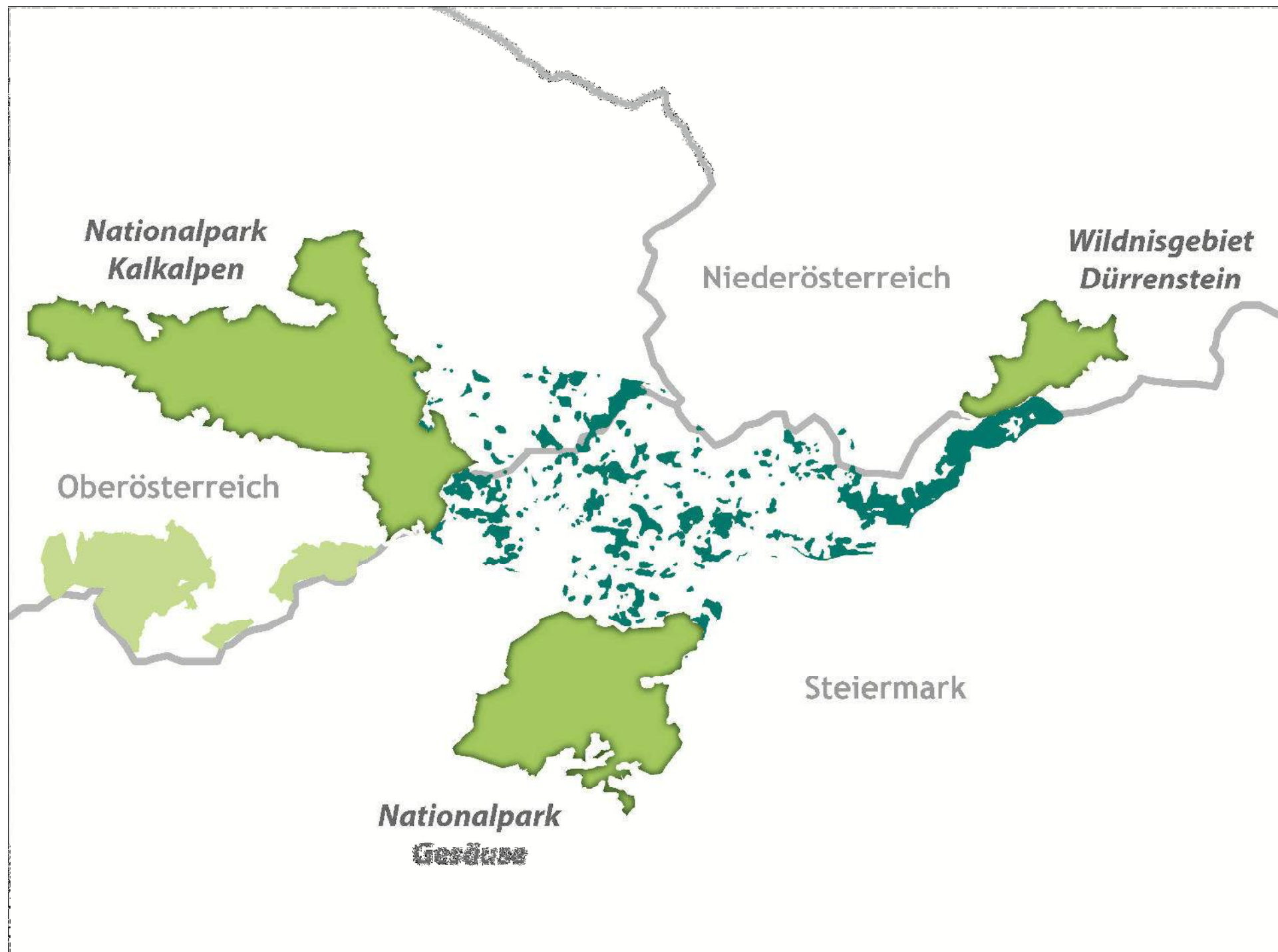
### Legende

### Einstufung der Trittsteine

-  untergeordnete Priorität
-  mittlere Priorität
-  hohe Priorität
-  Trittsteinflächen
-  Untersuchungsgebiet
-  Bundesländer
-  Schutzgebiete









## compound of protected areas

- The stepping stone corridor valorises the 3 protected areas significantly.
- All 3 provinces take benefit from the stepping stone corridor
- 3 established Natura 2000-sites connected -> national and european interest
- High value of this compound for connectivity in an over regional, alpine wide scale



# platform for cooperation

- land owners
- ministries
- municipalities
- nature conservation
- tourism
- ...



All relevant stakeholders should be involved!





## gemstones of NLSA-Region

- outstanding area of unspoiled nature
- outstanding cultural heritage - Eisenwurzen
- cultural world heritage? -> study Dr. Falser
- natural landscape toothed with cultural history
- one big region instead of regions? -> Is a UNESCO biosphere a proper framework?



# nature and culture

Ecological compound of European importance +  
cultural jewels at level of a world heritage

**= chance for the region!**



# concrete projects

- species projects: woodpecker, bats, beetles (deadwood)
- implementation of [pilot stepping stones](#)
- speeches and workshops : natural forestry, bark beetles, fir, lynx
- NaturWaldWeg – finding ways together
- concepts of financing



## Diapositive 20

---

**NC3**

Hier wird übergeleitet zu dem Beitrag von Hanns Kirchmeir  
Nitsch Christoph; 15/10/2013

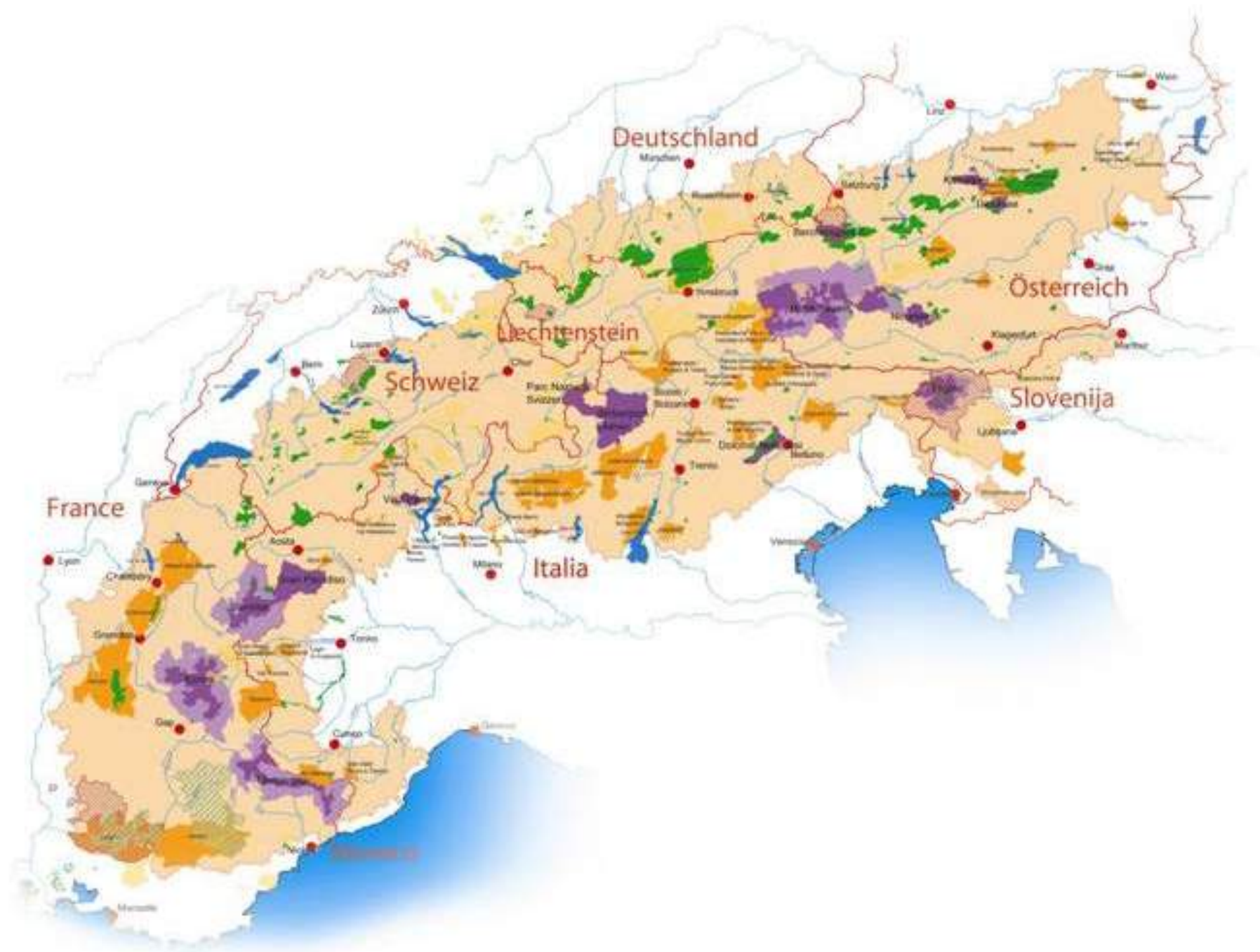


# visit our website

Come to [www.netzwerk-naturwald.at](http://www.netzwerk-naturwald.at) and find out some more news and activities!

Thank you for your attention!







# stepping stone #1

Together with SLF the first stepping stone is implemented!

40 ha serve the connectivity  
everlasting!

The contract proves: Together  
an innovative approach can be implemented to  
assure biodiversity in combination with wise  
land use.

